



# Kingfisher Bay Resort

Fraser Island

## Accommodation

- K17 Hotel Rooms Awinya
- (A) Wing ●
- N17 Hotel Rooms Boomanjin
- (B) Wing ●
- F12 Banksia Villas ●
- K8 Cooloola Villas ●
- C12 Pandanus Villas ●
- L22 Satinay Villas ●
- B3 Wilderness Lodges ●
- F4 Houses - Kingfisher Heights Estate ●
- R23 Houses - Southern Sunset Estate ●

## Resort Facilities

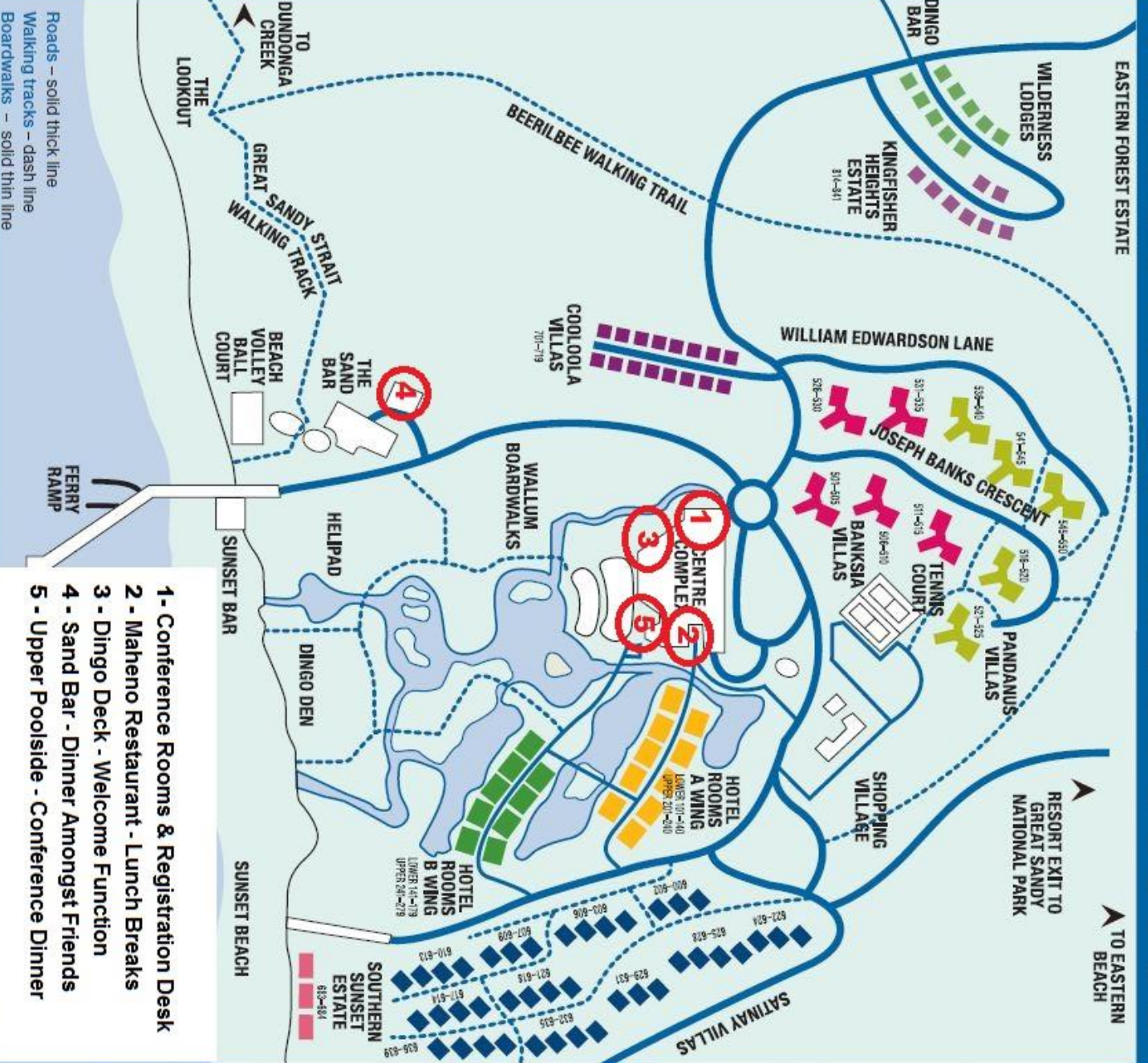
- J14 Activities Desk
- J14 ATM
- T9 Beach Volleyball Court
- G17 Bottle Shop
- U12 Canoe / Kayak Hire
- F13 Car Park
- J14 Centre Complex
- H15 Children's Playground
- J14 Conference Rooms
- S15 Dingo Den
- J14 First Aid
- U12 Fishing Equipment Hire
- G17 Fuel / Ice
- R10 Video Games
- G17 General Store
- R12 Helipad
- J14 Internet booths
- U12 Sunset Bar
- S15 Junior Rangers Den
- L19 Laundry Facilities - coin operated A Wing
- O19 Laundry Facilities - B Wing
- G17 Island Day Spa
- R10 Pool Tables
- G17 Post Box
- J14 Rangers' Desk
- J14 Reception
- L14 Satwater Pool and Spa
- S10 Sand Bar Pools
- G16 Shopping Village
- F14 Tennis Courts
- J14 Tour Bookings
- G17 Vehicle Car Wash
- G16 4WD Vehicle Hire
- H16 Villa Sales
- J14 Wireless Internet
- U12 Watersports - non-motorised
- J14 Wheelchair toilet

## Bars and Restaurants

- E1 Dingo Bar
- U12 Sunset Bar
- J14 Maheno Restaurant and Lounge Bar
- L15 Pool Bar
- R10 Sand Bar Bistro and Pizzeria
- J14 Seabelle Restaurant and Cocktail Bar

## Centre Complex

- Conference Rooms
- Maheno Restaurant and Bar
- Seabelle Restaurant and Bar
- Rangers' Desk
- Reception



- 1 - Conference Rooms & Registration Desk
- 2 - Maheno Restaurant - Lunch Breaks
- 3 - Dingo Deck - Welcome Function
- 4 - Sand Bar - Dinner Amongst Friends
- 5 - Upper Poolside - Conference Dinner

Roads - solid thick line  
Walking tracks - dash line  
Boardwalks - solid thin line

